

JWC Technologies

Antenna Product Catalog

- Mobile Antenna
- GPS Antenna
- LTE Antenna
- WIFI/Bluetooth Antenna
- Sub-Ghz Antenna
- AM/FM Antenna
- Cable and Accessories



Global Supply

Local Support

Introduction

JWC Technologies offer HF/VHF/UHF antenna, GSM/LTE antenna, WiFi/Bluetooth antenna, GPS antenna and microwave antenna and traditional FM/AM radio antenna, with cost conscious, superior workmanship and design features. From 27MHz to 5.8GHz, JWC Technologies designs and manufactures a wide variety of mobile antennas with a multitude of mounting options.

A wide array of specialty antennas including dual bands, elevated feed point and wide band models are also available. Multiple cable options, connectors, mounts and bracket products provide a complete antenna system.



JWC has emerged in the US market since 2006. Our antenna design team has been working with US customers to accomplish some challenging requirement and has been received very positive feedback on our innovation capabilities.

JWC offer Antenna Design Services, Antenna Manufacturing, and Post Sales Service to guarantee customer satisfaction.

Please visit our website: www.jwctech.com or sales agent for further information.

HF/VHF/UHF Mobile Antenna:

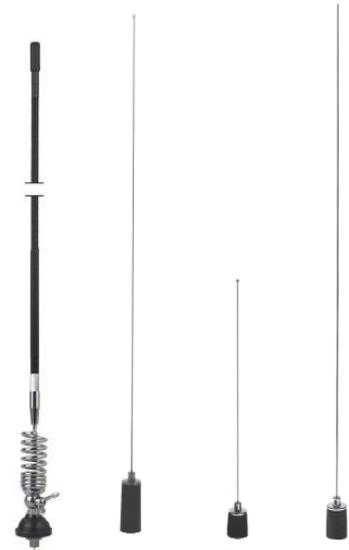
JWC Technologies offer a wide range of land mobile radio antenna product for the following frequency band: HF (27-36MHz), VHF(132-174MHz), UHF(400-500MHz). These antennas are designed and built for demanding applications and typically outlast the cars/boats they are mounted on. These antennas features rugged stainless steel spring and wideband tube assembly for maximum durability and shock absorption. These antennas are manufactured in over 100 variations, which can be classified into 2 different categories: quarter wave antenna and 5/8 wavelength antennas. Quarter wave antenna requires a solid ground plan, such as the roof of the car or truck. 5/8 wavelength antenna does not require ground plane and provide flexibility in any mounting application.

Low Band HF Antenna Technical Data

Max Power:	200~500 Watts
Nominal Impedance:	50/75 Ω
VSWR:	< 2.0: 1
Bandwidth @ (VSWR = 2.0:1)	~16% of the Center Frequency
Gain	Unity (2.15 dBi @ resonance)
Radiator Material	3mm (0.120") diameter tempered stainless steel
Optional Spring	Stainless Steel
Loading Coil	Tinned Copper Wire
Base Coil Housing	Molded Polymer
Antenna Type	Base loaded tapered 1/4 Wave (< 1/4 Wave, JML01 Model) Full length 1/4 Wave (JML02 Model) Base loaded 1/4 Wave (< 1/4 Wave, JML03 Model)

Low Band HF Antenna Part Number

Model	Length	Frequency	Field Tunable	Gain
JML01-27	1/4 Wave	27-31MHz	Yes	Unity
JML01-30	1/4 Wave	30-36MHz	Yes	Unity
JML01-37	1/4 Wave	37- 41MHz	Yes	Unity
JML02-30	1/4 Wave	30-36MHz	Yes	1.5dBi
JML02-37	1/4 Wave	37- 41MHz	Yes	1.5dBi
JML02-40	1/4 Wave	40-47 MHz	Yes	1.5dBi
JML02-47	1/4 Wave	47-54MHz	Yes	1.5dBi
JML02-66	1/4 Wave	66 - 132MHz	Yes	1.5dBi
JML03-40	1/4 Wave	40-47 MHz	Yes	Unity
JML03-47	1/4 Wave	47-54MHz	Yes	Unity
JML03-66	1/4 Wave	66 - 132MHz	Yes	Unity

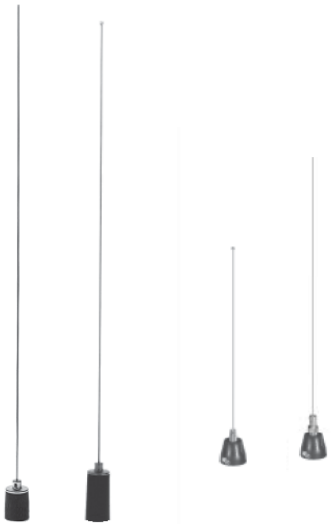


Quarter Wave Low Band HF Antenna



Quarter Wave / Collinear VHF/UHF antenna

HF/VHF/UHF Mobile Antenna



5/8 Wave VHF/UHF Antenna

VHF/UHF Band Antenna Technical Data

Max Power:	100~200 Watts
Nominal Impedance:	50 Ω
VSWR:	< 2.0: 1
Bandwidth @ (VSWR = 2.0:1)	~16% of the Center Frequency (1/4 Wave) ~6% of the Center Frequency (5/8 Wave)
Gain	1/4 Wave: Unity (2.15 dBi @ resonance) 5/8 Wave: 3dBi (5.2dBi @ resonance)
Radiator Material	2.5mm (0.100") OD tampered stainless steel
Optional Spring	Stainles Steel
Loading Coil	Tinned Copper Wire
Base Coil Housing	Molded Polymer (Black)
Antenna Type	Base loaded tampped 1/4 Wave (< 1/4 Wave, YQ Model) Base loaded 5/8 Wave (YK Model)

VHF/UHF Band Antenna Part Number

Model	Length	Frequency	Field Tunable	Gain
YQ132	1/4 Wave	132 - 174MHz	Yes	Unity
YK150	5/8 Wave	150 - 174Mhz	Yes	> 3dBi
YQ200	1/4 Wave	200 - 250MHz	Yes	Unity
YK220	5/8 Wave	220 - 250Mhz	Yes	>3dBi
YQ406	1/4 Wave	406 - 480Mhz	Yes	Unity
YQ430	1/4 Wave	430-512Mhz	Yes	Unity
YK450	5/8 Wave	450-470Mhz	Yes	>3dBi
YK470	5/8 Wave	470 - 512MHz	Yes	>3dBi
YQ806	1/4 Wave	806 - 966Mhz	Yes	Unity
YK806	5/8 Wave	806-856MHz	Yes	>3dBi
YK896	5/8 Wave	896 - 960Mhz	Yes	>3dBi



Low Profile 380Mhz ~ 960Mhz and 1710 ~ 2500 dual Band Antenna

VHF/UHF/GSM/WIFI integrated Antenna

JWC Technologies also offers low profile VHF/UHF antennas as shown. This low profile antenna is built with a tinned-copper helical coil in a strong polymer housing. It can provide reasonable gain with the compromise of the size.

All this antennas can be built with combination of GSM, WIFI antenna within the same housing.

GSM Antenna

JWC technologies offer high performance GSM antennas in a wide variety of form factors. Each of them features a dipole/monopole antenna with water proof polymer case.

The following table lists the most common models.

Technical Data

Frequency	824~894 / 1710~1990 MHz 880~960 / 1710~1990 MHz
VSWR	2.0:1
Bandwidth	± 5MHz
Impedence	50 Ω
Gain	2~3dB
Polarization	Vertical
Cable	RG174 or Custom
Connector	SMA/MCX/specified
Operational Temperature	-40 °C ~ + 85 °C

Part Number and Ordering Information

Model	Size (mm)	Mounting
JCG016	D29x120	Magnet/Adhesive
JCG017	115x22x4	Adhesive
JCG018	D71x14	Magnet/Adhesive
JCG019	39x33x14	Magnet/Adhesive
JCG023	D45x75.5	Screw
JCG025/821	D40x282 / D47x210	Magnet/Adhesive
JCG058	D50x48	screw(M24x1.5)
JCG401	D10.4x55	SMA
JCG402	D10x110	TNC
JCG601	D68x35	Screw
JCG806	D15x135	TNC
JCG824	95x22x9	Adhesive



JCG016



JCG017



JCG018



JCG023



JCG025/821



JCG058



JCG401



JCG402



JCG601



JCG814



JCG806



JCG824

GPS Active Antennas



WCA001/002



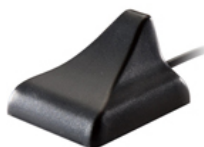
WCA003



WCA004



WCA006



WCA007



WCA015



WCA044

GPS Passive Antennas



WCA031



WCA032

GPS Antenna

JWC technologies offer a wide range of GPS antennas including active antenna, passive antenna and internal passive/active antenna.

Active/Passive GPS External antenna

JWC GPS active antenna provides a typical 28dB gain and has one of the industry's lowest noise figures. It provides clear GPS signal reception while minimizing loss of lock even in less than ideal conditions and is the optimum choice for GPS tracking and timing applications. Each of them features a precision tuned custom ceramic patch element, ESD circuit protection with a high rejection, narrow band optional SAW filter. JWC GPS antennas are available in all-plastic, non-corrosive package.

Passive GPS antenna contains the dielectric antenna only and does not contain the LNA and filter.

Technical Data

Dielectric Antenna	
Center Frequency	1575.42MHz ± 2MHz
Bandwidth	± 5MHz
Impedance	50 Ω
VSWR	1.5:1
Polarization	RHCP
LNA/Filter	
Nominal Gain	26 dB @ 2.5V
	28 dB @ 3.3V
	30 dB @ 5.0V
Noise Figure (typical)	1.5dB
Voltage	2.2V - 5.0V
DC Current	5-10mA
Out of Band Rejection	± 15MHz: 5dB
	± 20MHz: 10dB
	± 30MHz: 32dB
	± 40MHz: 40dB
Mechanical	
Cable	RG174 or custom cable
Connector	SMA/SMB/U.FL/MCX etc.
Housing	Black polymer or custom
Environmental	
Operational Temperature	-40 °C ~ + 85 °C
Humidity	55% ~ 75% RH
Water proof	IP67

Part Number and Order Information:

model	size (mm)	mounting
WCA001	48x39x14	Magnet/Adhesive
WCA002	43x33x14	Magnet/Adhesive
WCA003	D46x15	Screw
WCA004	39x33x14	Magnet/Adhesive
WCA006	30x30x14	Screw
WCA007	45x40x39	Magnet/Adhesive
WCA015*	D94x135	screw(M24x1.5)
WCA044**	32X12X8	Plug
WCA031	48x39x14	Magnet/Adhesive
WCA032	39x30x14	Magnet/Adhesive

*: LNA gain is 28/38/52dB

** : LNA gain is 20dB

Active GPS Embedded Antenna

The compact embedded GPS antennas ideal for GPS enabled ruggedized PDAs, laptops and portable GPS handheld. It provides the same electrical performance as the external counterpart.

Technical Data (See Active/Passive GPS External antenna section)

Part Number and Order Information:

model	size (mm)	mounting
WCN047	15X15X7.5	Custom/Mounting Screw Hole
WCN048	18.6x18.6x7.5	Custom/Mounting Screw Hole
WCN049	20x20x7.5	Custom/Mounting Screw Hole
WCN050	25.3x25.3x7.5	Custom/Mounting Screw Hole
WCN051	27.2x27.2x7.5	Custom/Mounting Screw Hole

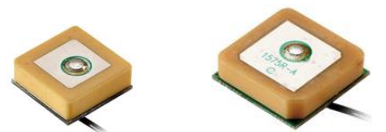
GPS Dielectric Chip Antenna

JWC technologies offer a big variety of GPS dielectric antenna. All of them can be custom tuned to fit on your system.

Technical Data and Part Numbers

model	size (mm)	Gain (dB)
JCJZ0936	9X9X3.6	-2.0dB
JCJZ1336	13X13X3.6	0.0dB
JCJZ1540	15X15X3.6	1.5dB
JCJZ1840	18X18X3.6	3.0dB
JCJZ2040	20X20X40	3.5dB
JCJZ2520	25X25X20	4.5dB
JCJZ2540	25X25X40	4.5dB
JCJZ2740	27X27X40	5.0dB

GPS Internal Active Antennas



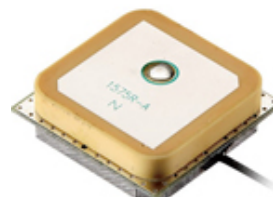
WCN047

WCN048



WCN049

WCN050



WCN051

GPS Dielectric Chip Antennas



JCJZ0936

JCJZ1540



JCJZ1840

JCJZ2040



JCJZ2520

JCJZ2540



JCW063



JCW069



JCW401



JCW403



JCW901/902



JCW903/904



JCW905/906



JCW909



JCW911



JCW914

WiFi/Bluetooth Antenna

JWC technologies offer high performance GSM antennas in a wide variety of form factors. The following table lists the most common models.

Technical Data

Frequency	2400 ~ 2500 MHz
VSWR	2.0:1
Bandwidth	100 MHz
Impedence	50 Ω
Gain	2~3dB
Power	50 Watts
Polarization	Vertical/Horizontal
Connector	SMA/MCX/specified
Operational Temperature	-40 °C ~ + 85 °C
Humidity	55% ~ 75% RH
Waterproof	IP67

Part Number and Ordering Information

Model	Size (mm)	Mounting
JCW063	115x22x4	Adhesive
JCW069	D29x120	Magnet
JCW401	D10.4x50	SMA
JCW403	D9.2x50	SMP/MMX
JCW901/902	D10x76 / D10x114	SMA
JCW903/904	D10x109 / D10x102	TNC/SMA
JCW0905/906	D13x136 / D15x135	TNC/SMA
JCW909	D13x157	TNC/SMA
JCW911	D60x170	Magnet
JCW914	142x29x13	Adhesive

GPS + GSM Combination Antenna

The GPS + GSM Combination Antenna consist of a GPS antenna and a GSM antenna in a waterproof and weather proof polymer package. The following lists the common models made by JWC technologies.

Technical Data:

GPS Dielectric Antenna

Center Frequency/Bandwidth	1575.42MHz ± 2MHz/± 5MHz
VSWR	1.5:1
Impedance	50 Ω
Polarization	RHCP

GPS LNA/Filter Parameters

Nominal Gain	26 dB @ 2.5V
	28 dB @ 3.3V
	30 dB @ 5.0V
Noise Figure (typical)	1.5dB
Voltage	2.2V - 5.0V
DC Current	5-10mA
Out of Band Rejection	± 15MHz: 5dB
	± 20MHz: 10dB
	± 30MHz: 32dB
	± 40MHz: 40dB

GSM Antennas Parameters

Frequency	824~894 / 1710~1990 MHz
	880~960 / 1710~1990 MHz
VSWR	2.0:1
Bandwidth	± 5MHz
Impedance	RHCP
Gain	2~3dB
Polarization	Vertical

Mechanical Parameters

Cable	RG174 or Custom
Connector	SMA/MCX/specified
Operational Temperature	-40 °C ~ + 85 °C

Part Number and Ordering Information

Model	Size (mm)	Mounting
JCB008	D80x15	Screw/Adhesive
JCB010	74x63x14	Magnet/Adhesive
JCB012	91x62x62	Screw
JCB013	110X80X76	Screw
JCB057	59x52x15	Magnet/Adhesive
JCB062	D50x48	Screw

GPS + GSM Combination



JCB008



JCB010



JCB012



JCB013



JCB057



JCB062

GPS + WIFI/Bluetooth Combination Antenna

GPS + WIFI/Bluetooth Combination



JCL008



JCL010



JCL012



JCL013



JCL057



JCL062

GPS + WIFI/Bluetooth Combination Antenna

The GPS + WIFI/BLUETOOTH Combination Antenna consist of a GPS antenna and a WIFI/BT antenna in a waterproof and weather proof polymer package. The following list the most common models made by JWC technologies.

Technical Data:

GPS Dielectric Antenna

Center Frequency	1575.42MHz ± 2MHz / ± 5MHz
VSWR	1.5:1
Impedance	50 Ω
Polarization	RHCP

GPS LNA/Filter Parameters

Nominal Gain	26 dB @ 2.5V 28 dB @ 3.3V 30 dB @ 5.0V
Noise Figure (typical)	1.5dB
Voltage	2.2V - 5.0V
DC Current	5-10mA
Out of Band Rejection	± 15MHz: 5dB ± 20MHz: 10dB ± 30MHz: 32dB ± 40MHz: 40dB

WIFI/Bluetooth Antennas Parameters

Frequency	2400 ~ 2500 MHz
VSWR	2.0:1
Bandwidth	100 MHz
Impedance	50 Ω
Gain	2~3dB
Power	50 Watts

Mechanical Parameters

Cable	RG174 or Custom
Connector	SMA/MCX/specified
Operational Temperature	-40 °C ~ + 85 °C

Part Number and Ordering Information

Model	Size (mm)	Mounting
JCL008	D80x15	Screw/Adhesive
JCL010	74x63x14	Magnet/Adhesive
JCL012	91x62x62	Screw
JCL013	110X80X76	Screw
JCL057	59x52x15	Magnet/Adhesive
JCO062	D50x48	Screw

Portable Rubber Duck Antenna:

JWC offers a variety of Rubber Duck Antennas, as illustrated on the pictures. It covers low HF band (27-100MHz), VHF band(118-225MHz), UHF band (300 – 512MHz), Trucking band (800 – 900MHz), and 2.4GHz band for WiFi/Bluetooth application.

Rubber Duck Antenna General Electrical Performance

Rubber Ducky antennas are significantly smaller than a wavelength and have reasonable performance, but they do not have either the gain or the aperture of larger antennas. Therefore, their performance will always be somewhat compromised. JWC Rubber duck antenna is design to match to a 50 Ohm load with about 5% usable bandwidth.

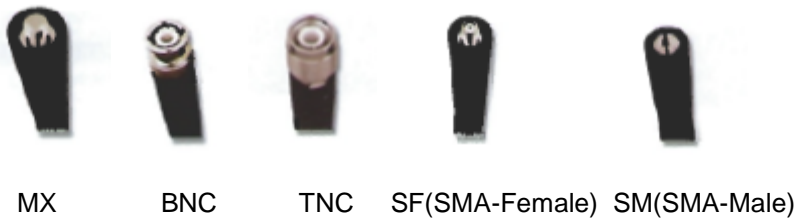
VSWR	2.0:1
Bandwidth	5 ~ 15%
Impedence	50 Ω
Gain	0 dB
Power	50 Watts

HF/VHF Rubber Duck Antennas

Model	Frequency	Connector	length
JRL01	27-88MHz	BNC, TNC, SF	6" - 10"
JRL02	27-88MHz	BNC, TNC, SF, MX	10" - 11.5"
JRL03	27-88 MHz	BNC, TNC, MX	12"
JRL04	118-225MHz	BNC, TNC, MX, SF	5.6" - 7.8"
JRL05	136 - 174MHz	MX, SF	5.6"
JRL06	150-174MHz	BNC, TNC, SF, MX	10.5"
JRL07	118-225MHz	BNC, TNC, SF, MX	7" - 8"
JRL08	118-225MHz	BNC, TNC, SF, MX	3.3" - 5.1"
JRL09*	118-174MHz	BNC, TNC	17"
JRL10	118-225MHz	BNC, TNC, MX	17"

Note: *: telescope antenna

Common Connector Types



Portable Rubber Duck Antenna



JRL10 JRU02 JRU03



JRU04 JRU05 JRU06



JRS01 JRS02 JRS03

UHF Rubber Duck Antennas

Model	Frequency	Connector	length
JRU02-308	308 - 322 MHz	BNC, TNC, SF, SM, MX	6.5" - 7"
JRU02-312	312 - 318 MHz	BNC, TNC, SF, SM, MX	6.5" - 7"
JRU02-400	400 - 420 MHz	BNC, TNC, SF, SM, MX	6.5" - 7"
JRU02-410	410 - 430 MHz	BNC, TNC, SF, SM, MX	6.5" - 7"
JRU02-420	420 - 450 MHz	BNC, TNC, SF, SM, MX	6.5" - 7"
JRU02-440	440 - 460 MHz	BNC, TNC, SF, SM, MX	6.5" - 7"
JRU02-450	450 - 470 MHz	BNC, TNC, SF, SM, MX	6.5" - 7"
HRU02-470	470 - 512 MHz	BNC, TNC, SF, SM, MX	6.5" - 7"
JRU03-308	308 - 322 MHz	BNC, TNC, SF, SM, MX	3.2" - 4.1"
JRU03-312	312 - 318 MHz	BNC, TNC, SF, SM, MX	3.2" - 4.1"
JRU03-400	400 - 420 MHz	BNC, TNC, SF, SM, MX	3.2" - 4.1"
JRU03-410	410 - 430 MHz	BNC, TNC, SF, SM, MX	3.2" - 4.1"
JRU03-420	420 - 450 MHz	BNC, TNC, SF, SM, MX	3.2" - 4.1"
JRU03-440	440 - 460 MHz	BNC, TNC, SF, SM, MX	3.2" - 4.1"
JRU03-450	450 - 470 MHz	BNC, TNC, SF, SM, MX	2.9" - 3.9"
HRU02-470	470 - 512 MHz	BNC, TNC, SF, SM, MX	2.8" - 3.6"
JRU04-308	308 - 322 MHz	BNC, TNC, SF, SM, MX	6.6" - 7"
JRU04-312	312 - 318 MHz	BNC, TNC, SF, SM, MX	6.6" - 7"
JRU04-400	400 - 420 MHz	BNC, TNC, SF, SM, MX	6.6" - 7"
JRU04-410	410 - 430 MHz	BNC, TNC, SF, SM, MX	6.6" - 7"
JRU04-420	420 - 450 MHz	BNC, TNC, SF, SM, MX	6.6" - 7"
JRU04-440	440 - 460 MHz	BNC, TNC, SF, SM, MX	6.6" - 7"
JRU04-450	450 - 470 MHz	BNC, TNC, SF, SM, MX	6.6" - 7"
HRU02-470	470 - 512 MHz	BNC, TNC, SF, SM, MX	6.6" - 7"
JRU05	Tunable 400 - 512 MHz	BNC, TNC, SF, SM, MX	10"
JRU06	Tunable 420 - 512 MHz	BNC, TNC, SF, SM, MX	3.5"

Trunking Application Antennas

Model	Frequency	Connector	length
JRS01-806	806-866MHz	BNC, TNC, SF, HT, KR,	3.7" - 4.6"
JRS01-821	821-902MHz	BNC, TNC, SF, HT, KR,	3.7" - 4.6"
JRS01-902	902-960MHz	BNC, TNC, SF, HT, KR,	3.5" - 3.7"
JRS02-806	806-866MHz	BNC, TNC, SF, HT, KR,	8" - 9"
JRS02-821	821-902MHz	BNC, TNC, SF, HT, KR,	8" - 9"
JRS02-902	902-960MHz	BNC, TNC, SF, HT, KR,	8" - 9"
JRS03-806	806-866MHz	BNC, TNC, SF, HT, KR,	6.9"
JRS03-821	821-902MHz	BNC, TNC, SF, HT, KR,	6.9"
JRS03-902	902-960MHz	BNC, TNC, SF, HT, KR,	6.9"

AM/FM Receiver Antenna

JWC technologies offer high performance AM/FM antennas in a wide variety of form factors. The following table lists the most common models. Working for AM(535~1620KHz) / FM(87~108MHz).

Technical Data

Frequency (AM)	150 ~ 1620Khz
Gain (without pre-amplifier)	6dBi ± 1dBi
Impedance	< 90pF
Frequency (FM)	87.5 ~ 108 Mhz
Gain (without pre-amplifier)	7dBi
Impedance	75 ~ 150 Ω

Part Number and Ordering Information

Windshield Antenna

Model	Connector	Power	Gain
JAE001	DIN	DC12V, 40mA	14~18dB
JAE002	DIN	DC12V, 40mA	14~18dB
JAE003	DIN	DC12V, 40mA	14~18dB

*Mounting: JAE Series antenna is mounted on the windshield/back window.

Motor driven antenna

The mast is driven up and down by the attached motor.

Model	Connector	Power
JAP001	DIN	DC12V,1A
JAP002	DIN	DC12V, 1A
JAP003	DIN	DC12V, 1A

Roof antenna

These antennas can be mounted on top roof of car. some can be fixed at arbitrary angel (0~90°), such as JAT001.

Model	Connector
JAR001	Screw
JAG001	Screw
JAT001	Screw



JAE001 JAE002 JAE003



JAP001 JAP002 JAP003



JAR001 JAG001 JAT001



JDA001 JDA002 JDA003



JGF001 JGF002



JGF003



Replacement Mast

DVB/DAB Antenna

The DVB/DAB+ AM/FM Combination Antenna consist of a DVB/DAB antenna and a AM/FM antenna in a waterproof and weather proof polymer package. The following lists the common models made by JWC technologies.

Technical Data

DVB antenna	
Frequency	149 ± 1.5Mhz
Gain	6dBi
VSWR	1.5: 1
Impedance	50 Ω

DAB Antenna	
Frequency (B III/L-Band)	174 ~ 237Mhz/1452 ~ 1492Mhz
Gain (BIII/L-Band)	9dBi / 2dBi
VSWR	1.5: 1
Impedance	50 Ω

Part Number and Ordering Information

Model	LNA	TV	AM/FM
JDA001	N	Y	N
JDA002	Y	Y	Y
JDA003	Y	N	Y

GPS+FM/AM antenna

The GPS + FM/AM Combination Antenna consist of a GPS antenna and a AM/FM antenna in a waterproof and weather proof polymer package. The following lists the common models made by JWC technologies

Model	GPS	FM/AM	TV
JGF001	Y	Y	N
JGF002	Y	Y	Y
JGF003	Y	Y	Y

Replacement Mast

Model	Length	Connector	material
JRP001	16"	M6 Screw	Glass Fiber
JRP002	16"	M6 Screw	Glass Fiber
JRP003	6.5"	M6 Screw	rubber
JRP004	7"	M6 Screw	Stainless Steel
JRP005	9"	M6 Screw	Stainless Steel

Mounts, Accessories, Cable Assembly and Connectors

JWC RF cable assemblies serve a multitude of commercial wireless applications such as cellular telephones, wireless LAN, advanced automotive electronics, and satellite and navigation systems. RF cable assemblies also serve defense applications in radars, missile systems, EW and surveillance. Our custom RF coax cable assemblies and connectors serve a multitude of technological wireless applications such as Zigbee, RFID, WiMax, WiFi, MIMO, UWB, Bluetooth, and GPS. All JWC RF connectors conform to quality assurance standards as well as applicable industry quality standards and military specifications

Cable Assembly Part Number Guide

JBL	54	120	S1	N4
Series	Cable Type	Cable Length	Connector	Connector
Cable Assembly	RG-174/U	120 Inches	SMA Male	N Female

Note:

Cable Type
01 = LMR 100
02 = LMR195
11 = Pro-Flex 100
12 = Pro-Fex plus 195
14 = Pro-flex Plus 195A/U
20 = LMR240
30 = LMR400
31 = LMR400 Direct Burial
44 = LMR600
52 = RG-58A/U
53 = RG-142/U
54 = RG-174/U
55 = RG-213/U
60 = RG-58/U
61 = RG-58 Teflon (white)
62 = RG316
74 = LMR900

Connector Type
B = BNC
N = N
F = FME
S = SMA
P = PL259
M = Mini-UHF
T = TNC
U = SMB
X = MCX
Z = MMCX
L = U.FL
W = SMP
H = H.FL

Gender
1 = Male
2 = Male reverse Polarity
3 = Male right angle
4 = Female
5 = Female reverse polarity
6 = Female Right angle

Common Connectors



SMA & SMB



MCX & MMCX



BNC &TNC



N Type



Mini-UHF

U.FL

Antenna Mounts



Screw (NMO/G/GM /SM/T type) & Magnetic Mount



Truck Lid Mount & Glass Mount

For Product Information and Sales:

Contact JWC Technologies for product sales, technical assistance, product applications, part number questions, warranty and service questions.

Contact information:

Head office:	JWC Technology, Inc.
Address:	554 N. Frederick Ave, Suite 190 Gaithersburg, MD 20877
Tel:	(571) 278-5495
E-mail:	Sales@jwctech.com
Web:	www.jwctech.com